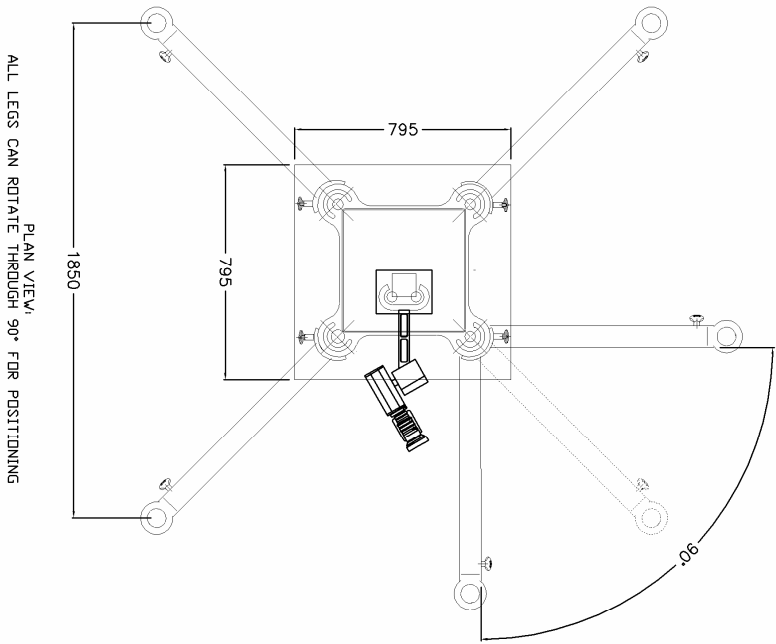


SPECIFICATIONS: VERTICAL TRACKING SYSTEM

Remote Head	
Camera	Panasonic 800
Lens	4 x 7.5mm Lens
Remote head	MiniShot
Min lens height from ground	475mm
Max lens height from ground	7m for freestanding system 12 .5m when supported by other structure (e.g. Fixed to wall)
Track Sizes	
Track gauge	120mm
Track length (Height) - Freestanding System	7 m
Track length (Height) - Attached to wall or structure	12.5m max
Track length (Height) - System rigged with overhead chain hoist	9m max
Freestanding System	Floor area: 1900 x 1900
System attached to wall or structure	Floor area: 700mm x 600mm clearance
Track Speeds	
Max Speed - Single phase power	3.5m/sec
Max Acceleration - Single phase power	3m/sec*sec
Track Control	
Motion control	Fully programmed end stops/Accel/Decel/Safety cut-outs
Operator inputs	Proportional Joystick/Proportional Foot Pedals/Button Console/Directional Footswitches
Rigging	
System attached to wall or structure	<ol style="list-style-type: none"> 1. Floor area: 700mm x 600mm clearance. 2. System should be attached to structure at top and every metres from base. 3. System can be lifted from top by chain hoist to help with assembly.
System rigged with overhead lifting point and stabilising wires	<ol style="list-style-type: none"> 1. Floor area: 700mm x 600mm clearance. 2. System can be lifted from top by chain hoist and secured with wire bracing.
Special Requirements	
Operating Position	Where practicable, track preferably in operators line of site
Track Power & Cabling	
Power Supply	13amp or 16 amp, single phase'
Power location	Power cable run to base of track
Maximum distance to operating position for cables	200m
Shipping Weights & Sizes - (Freestanding System)	
Gross Weight	485kg
Main Flight case with wheels	L =1500 x W=720 x H=950/350kg
Track - 3 sections stacked in carry bags with handles	L =2000 x W=140x H=140/30kg
Remote Head - Case with handles	L =600 x W=450 x H=450/25kg
Camera - Case with handles	L =600 x W=250 x H=450/20kg
Shipping Weights & Sizes - (12m System)	
Gross Weight	575kg
Main Flight case with wheels	L =1500 x W=720 x H=950/350kg
Track - 6 sections stacked in carry bags with handles	L =2000 x W=140x H=140/30kg each
Remote Head - Case with handles	L =600 x W=450 x H=450/25kg
Camera - Case with handles	L =600 x W=250 x H=450/20kg

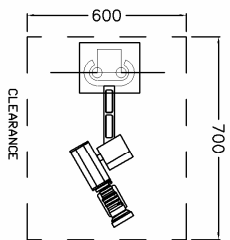
This information is for guidance only and may differ subject to requirements

VERTICAL TRACK
FREESTANDING
FOOTPRINT

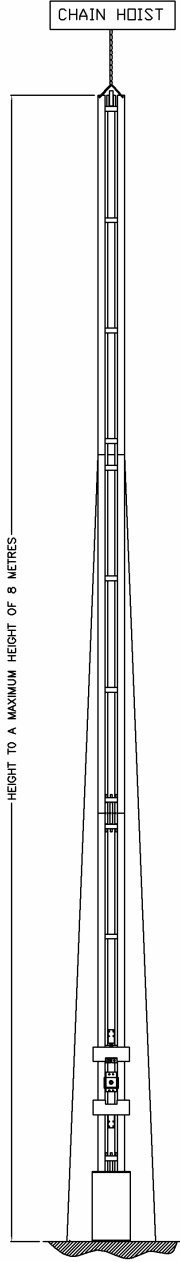


PLAN VIEW
ALL LEGS CAN ROTATE THROUGH 90° FOR POSITIONING

VERTICAL TRACK
RIGGED OR SUPPORTED
FOOTPRINT

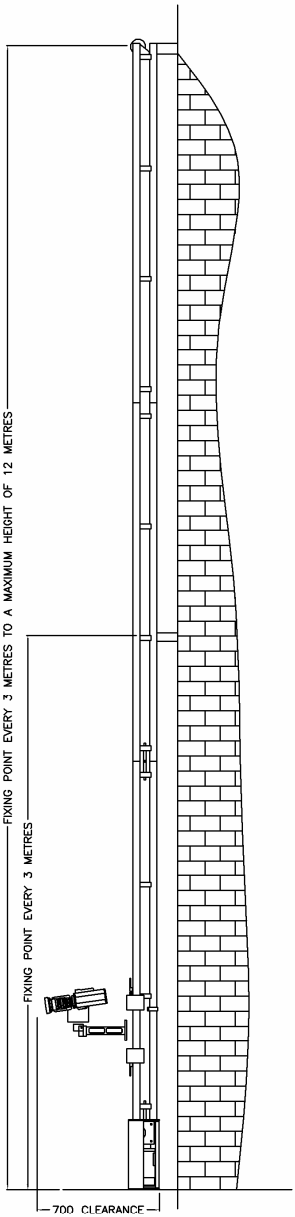


VERTICAL TRACK SYSTEM SUPPORTED BY RIGGING



System supported from top by chain hoist and fixed to floor. also requires steel stabilising wires

VERTICAL TRACK SYSTEM FIXED TO SUPPORTING STRUCTURE



System attached to structure

VERTICAL TRACK 7 metre Freestanding System

